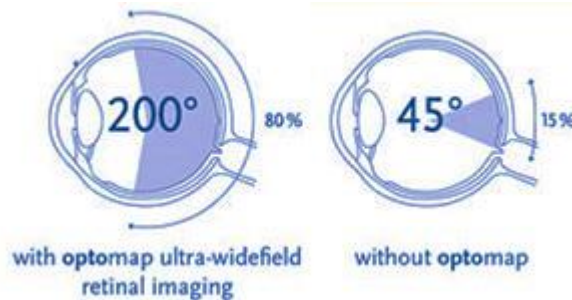


# optomap<sup>®</sup>

## Retinal Exam

We offer the optomap<sup>®</sup> Retinal Imaging as part of your eye health exam.

- It gives a much broader and more detailed view of the retina – 200° vs 45°
- The doctors can diagnose eye conditions and monitor retina changes due to illness, injury or disease
- It will become part of your medical file and will give us a baseline to compare your retina in future years.
- Our doctors strongly believe it is an essential and prescribe it for patients yearly.
- It is non-invasive and no flashes are used.



By picking an option and signing below, you indicate that you accept to proceed with the **optomap<sup>®</sup>** at today's visit.

\_\_\_\_\_ I have elected to have the **optomap<sup>®</sup>** Retinal Imaging today and Understand that I may be charged a fee of \$39 for this state of the art screening.

\_\_\_\_\_ I would like to talk with the doctor to learn more about the **optomap<sup>®</sup>** Retinal Imaging before proceeding with the test.

Patient's Signature: \_\_\_\_\_ Date: \_\_\_\_\_